

2018

Anthilia
Capital Partners
SGR

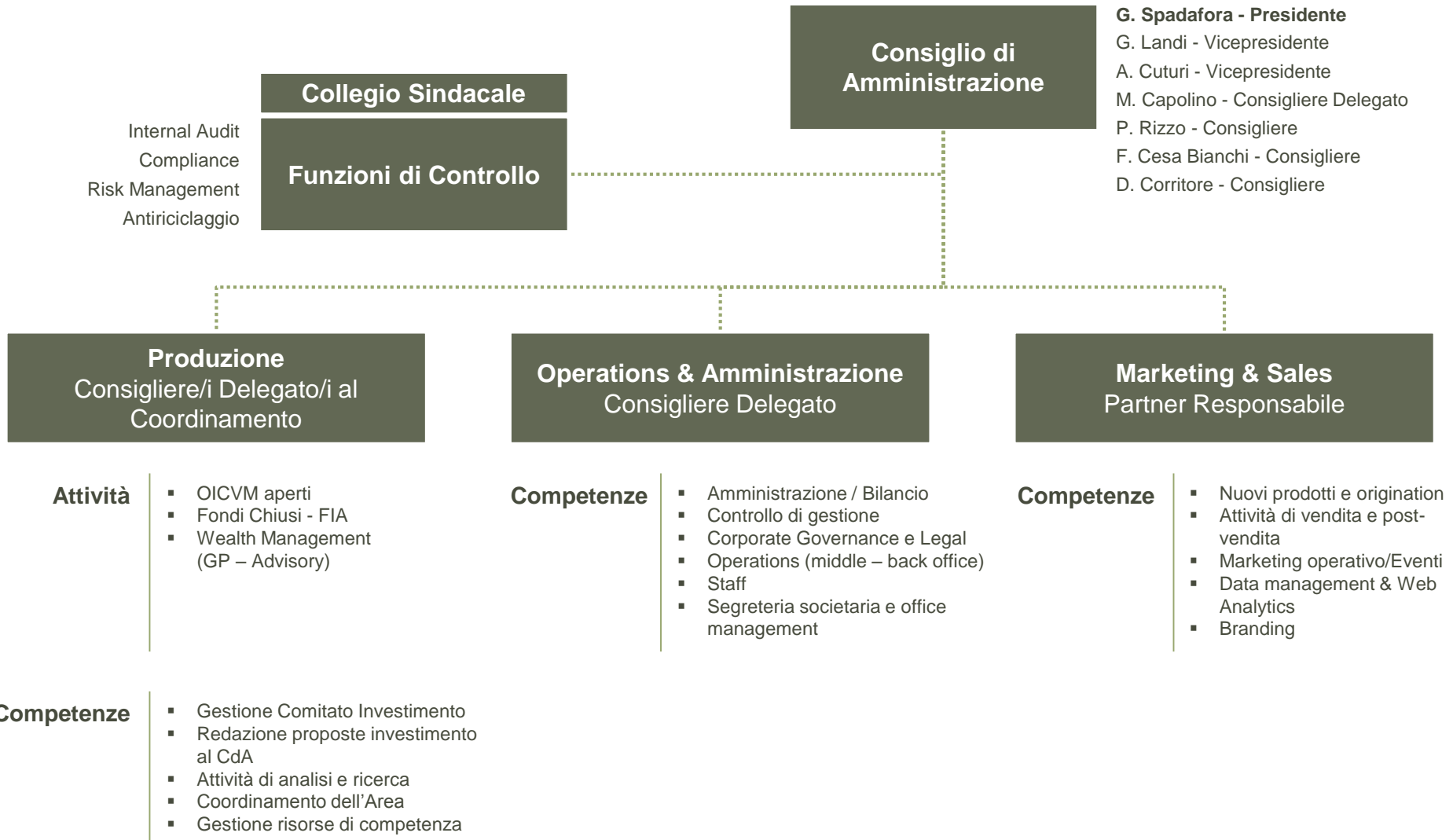
Organigramma



Aprile 2018

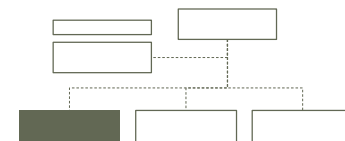


1° Livello





2° Livello



Produzione
Consigliere/i Delegato/i al Coordinamento
A. Cuturi
P. Rizzo

OICVM

Risorse totali = 7

- Partner**
- A. Cuturi
 - P. Rizzo
 - M. Ratzinger
 - G. Sersale
 - A. Chouillou

- Senior**
- S. Chelini
 - P. Rinaldi

FIA

Risorse totali = 5

- Partner**
- G. Landi (ad interim)
 - B. Ellero (Resp. PD)

- Senior**
- L. Novati (PD)
 - S. Righetti (PD)

- Junior**
- F. Colli Vignarelli

**Wealth Management
(GP – Advisory)**

Risorse totali = 4

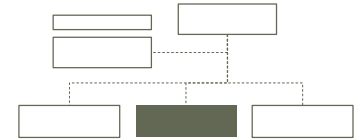
- Partner**
- M. Orioli
 - L. Cuppini

- Senior**
- G. Piazzoli

- Junior**
- G. Derada Troletti



2° Livello



Operations - Amministrazione
Consigliere Delegato
M. Capolino

**Amministrazione,
Bilancio & Controllo**

Risorse totali = 1

Junior | ▪ L. Rizzi

**Corporate
Governance & Legal**

Risorse totali = 1

Partner | ▪ K. Bolzoni

Operations
Mid – Back Office

Risorse totali = 3

Senior | ▪ C. Gipponi (Resp.)
▪ V. Marangoni
▪ S. Bottini

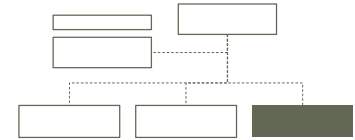
**Staff
Segreteria Societaria**

Risorse totali = 2

Junior | ▪ J. Narzisi
▪ G. Garavaglia



2° Livello



Marketing & Sales
Partner Responsabile
D. Colantonio

Mercato e Prodotti

Risorse totali = 3

- Partner**
- D. Colantonio
 - M. Orioli
 - M. Soriani

Marketing operativo

Risorse totali = 1

- Junior**
- E. Locorotondo

Vendita e post-vendita

Risorse totali = 3

- Partner**
- D. Colantonio
- Senior**
- G. Cavalli
 - A. Luise

Data Management & Web Analytics

Risorse totali = 2

- Senior**
- V. Picciolini
- Junior**
- L. Catalucci