

# Anthilia Capital Partners SGR

## Anthilia Blue Planetarium Sicav Global Macro Fund

Monthly Report 30 November 2020

www.anthilia.it



### NAV since inception



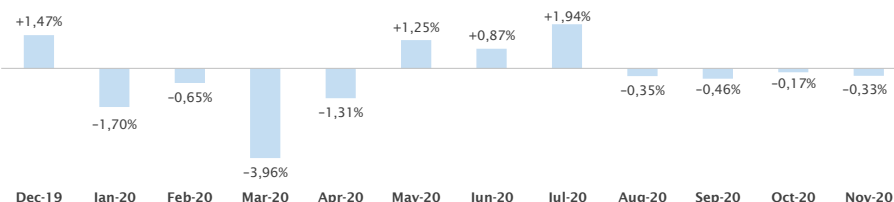
### Historical Returns (%)

	Jan	Feb	Mar	Apr	May	Jun	Jul	Aug	Sep	Oct	Nov	Dec	Year
2008	-	-	-	-	-	-	-	-	-	-	-	-	N.A.
2009	+0,25	+0,25	+0,07	+1,12	+0,06	-0,50	+0,23	+0,68	+0,95	+0,39	+0,01	+0,34	+3,90
2010	-1,15	-0,53	+0,49	+0,84	-0,25	+0,59	-0,77	+1,10	+0,24	+0,19	+0,83	+1,20	+2,79
2011	-1,34	-0,33	+0,14	+0,01	+0,40	-0,98	-0,25	-2,26	-2,43	+2,02	-4,00	+0,51	-8,32
2012	+4,11	+2,56	-0,72	-2,75	-2,33	-0,26	+2,66	+1,81	+2,09	+0,99	+0,32	+1,05	+9,70
2013	+1,56	-2,55	+0,20	+0,43	+0,19	-1,52	+0,84	+0,40	-0,02	+1,33	+1,51	-1,07	+1,23
2014	-0,19	+1,00	+0,20	-0,46	+0,13	+0,00	-0,51	-0,32	+0,16	-1,46	+1,21	+0,75	+0,47
2015	+5,18	+4,18	+1,71	-1,85	-1,13	-3,15	+2,71	-2,75	-3,13	+5,05	+1,50	-2,45	+5,40
2016	-3,60	-1,63	+1,50	+2,01	-0,02	-3,02	+1,87	+1,26	-0,63	+2,86	-1,49	+2,85	+1,69
2017	-0,27	-0,37	+0,14	+0,55	-0,36	-0,56	-0,18	-1,25	+1,48	+0,82	-0,49	-1,14	-1,66
2018	+0,22	-0,06	-2,46	+1,80	-0,43	-0,48	+0,92	-1,77	+1,58	-3,31	-0,01	-3,79	-7,70
2019	+3,93	+1,11	-0,34	+0,96	-1,03	+0,55	+0,06	-0,69	+0,80	+0,74	+0,62	+1,47	+8,40
2020	-1,70	-0,65	-3,96	-1,31	+1,25	+0,87	+1,94	-0,35	-0,46	-0,17	-0,33	-	-4,88

### Performance analysis

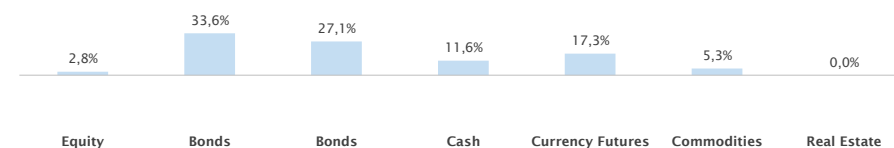
YTD performance	-4,88%	Annualized volatility	5,70%
Return since inception	+8,45%	Monthly VaR 99%	2,97%
Sharpe ratio	0,10	Maximum drawdown	-16,25%
Alpha	-0,36%	Time to recovery (months)	-
		Market correlation	0,63
		Beta	0,17

### Monthly returns - last 12 months

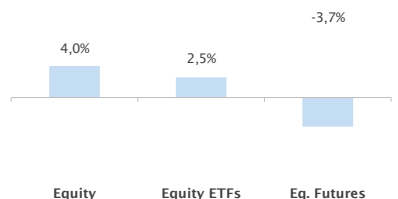


### Portfolio analysis

#### Asset allocation



#### Equity allocation



#### Top 10 Equity Holdings

Name	(%)
MSCI EMERG DEC 2020	3,88
NIKKEI 225 (CME) MAR21	1,79
NEXI SPA	1,23
AVIO SPA	0,84
BARRICK GOLD CRP	0,81
SAP SE	0,77
NET INSURANCE SPA	0,29
NASDAQ 100 E-MINI FUT DEC20	-4,37
S&P500 EMINI FUT DEC20	-4,86

WARNING: Past performances are by no means a guarantee of future performance. Performances are gross of tax and net of management fees. Any subscription to the Open-ended investment fund can be carried out only on the basis of the full prospectus, available on Anthilia's website.

#### Anthilia Blue

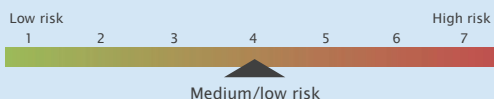
Portfolio Managers	Andrea Cuturi   Giuseppe Sersale	
AUM (Mln €)	18,7	
Currency	Euro €	
NAV frequency	Daily	
UCITS Type	SICAV UCITS V	
Domicile	Luxembourg	
Custodian Bank	RBC Investor Services	
Auditor	Mazars	
Management fee (%) A	1,45	
Management fee (%) B	0,95	
Performance fee (%)	20 (perpetual high watermark)	
Minimum investment	none	class A
	€ 250.000	class B

#### Class B (Institutional)

NAV	97,26
Launch date	28 November 2008
ISIN code	LU0374938057
Bloomberg ticker	PLANTBB LX

Contacts	info@anthilia.it   www.anthilia.it
Swiss Representative:	ACOLIN Fund Services AG
Swiss Paying Agent:	PKB Privatbank AG
Publications:	www.fundinfo.com

#### Risk Profile



#### Investment policy

Flexible investment style. The investment objective aims at delivering positive returns through a diversified asset allocation. Anthilia Blue combines a macro view - investing in government bonds, equity index futures, ETFs - with a fundamentally-based stock selection, mainly in the European equity area. Eligible stocks are mainly large Cap. Fixed income investments are selected among governmental and supranational issuers only, with a minimum rating of investment grade. The fund may invest maximum 10% of its NAV in third party UCITS. Currency exposure can be hedged upon Fund Manager market view. Corporate bonds, credit derivatives, covered warrants, asset backed securities (ABS) and OTC derivatives are excluded from the investment universe. The fund may invest in listed financial derivatives for: hedging risk, managing portfolio efficiently, investing purposes. Global risk exposure attributable to financial derivatives cannot exceed 100% of the fund net asset value. Investment approach and strict risk management discipline guarantee maximum liquidity of portfolio holdings on a daily basis. Andrea Cuturi, Fund Manager, holds a longstanding international experience in financial investments.

#### Equity sector exposure (top 5)

Sector	(%)
Aerospace & Defense	0,84

#### Equity country exposure (top 5)

Country	(%)
ITALY	2,36
GERMANY	0,77

#### Bond Portfolio

Duration portafoglio bond	0,90
---------------------------	------

#### Currency Exposure

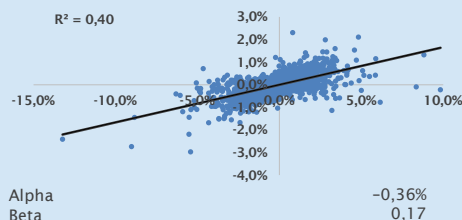
Currency	(%)
EUR	106,6
CHF	0,0
GBP	1,1
USD	-8,1
JPY	0,3

# Anthilia Capital Partners SGR



## Equity exposure dynamics

Alongside graphic: since inception equity gross and net exposure to equity. Below graphic: sub-fund performance correlation with European equity market Stoxx 600 index performance, net of risk-free rate.



On the X axis we represent the extra-performance of the European equity market vs risk-free return.  
 On the Z axis we represent the extra-performance of the fund vs risk-free return

## Portfolio flexibility

Alongside graphic: comparison between the fund's equity net exposure and the Stoxx 600 index performance.  
 Market timing: investment opportunities seized by fund's portfolio manager in several market trends.

## Value at Risk

Monthly VaR - Value at Risk - indicates ex-ante portfolio's risk, calculated with Montecarlo methodology with a reliability level of 99%.

Daily VaR level is compared with VaR monthly limit as set by Anthilia's Board of Directors.

## Asset allocation

Alongside graphic: historical fund exposure to each asset class.

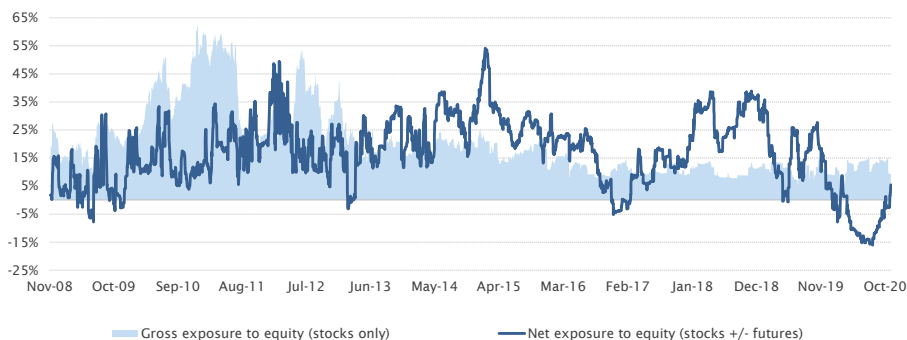
Below table: average % weight of each asset class in the fund portfolio.

### Average net exposure to asset classes - s.i.

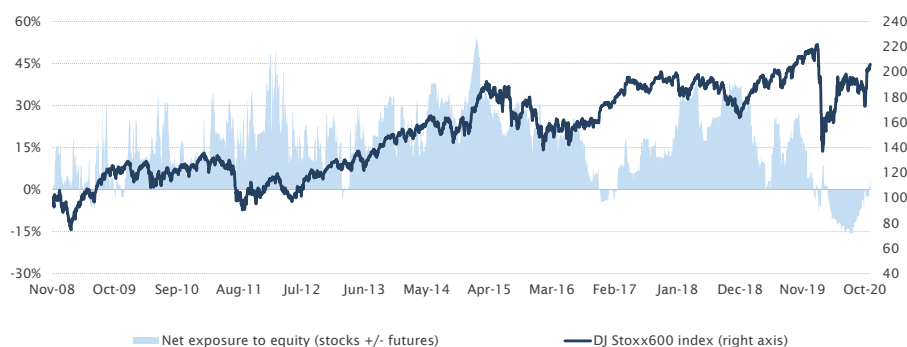
Equity	16,83%
Durations	13,26%
Bonds 1-2Yr	40,63%
Cash	8,67%
Commodities	5,25%

## Equity exposure

### Gross exposure (stocks) vs net exposure

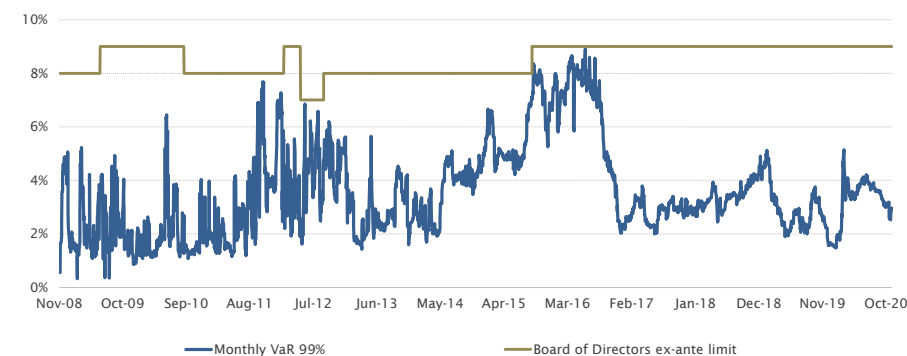


### Net exposure vs Stoxx 600 Index



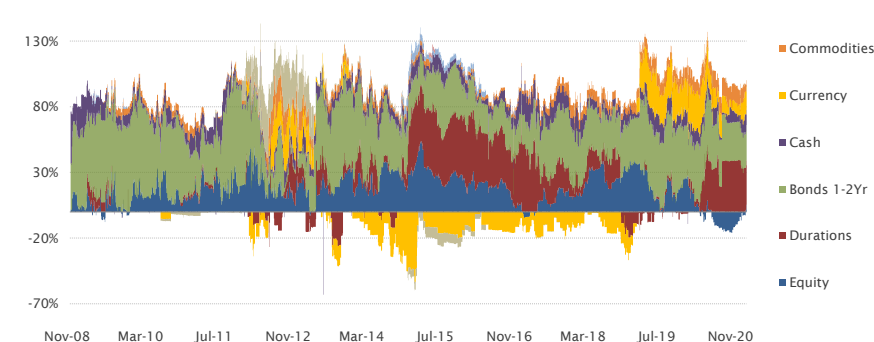
## Risk analysis

### Ex post daily VaR 99% compared to monthly VaR limit set by Board of Directors



## Portfolio Evolution

### Portfolio allocation - since inception



WARNING: Past performances are by no means a guarantee of future performance. Performances are gross of tax and net of management fees. Any subscription to the Open-ended investment fund can be carried out only on the basis of the full prospectus, available on Anthilia's website.