

2018

Anthilia  
Capital Partners  
SGR

## Organigramma

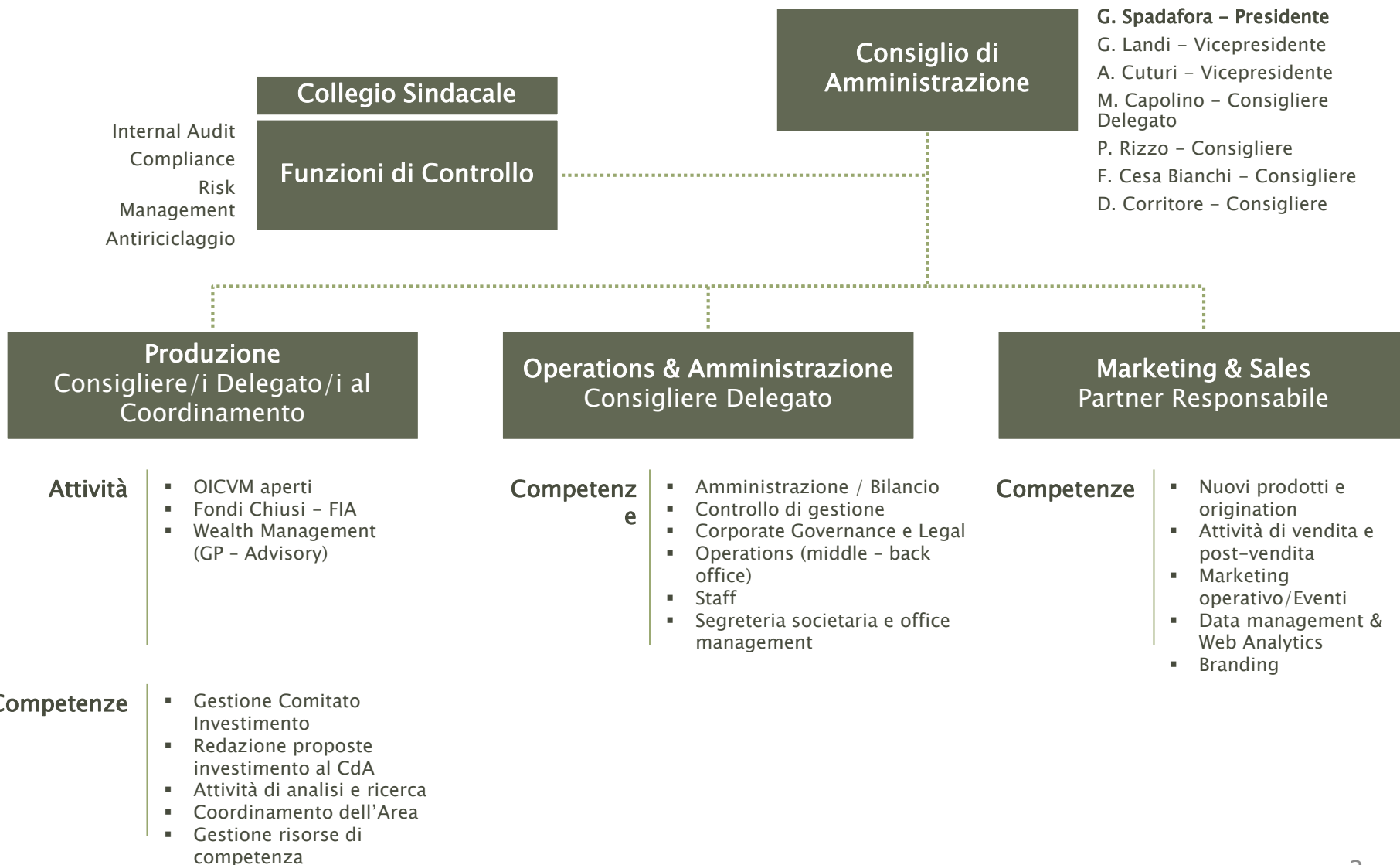
---



Giugno 2018

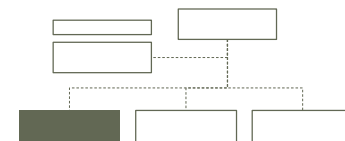


# 1° Livello





## 2° Livello



**Produzione**  
Consigliere/i Delegato/i al Coordinamento  
A. Cuturi  
P. Rizzo

**OICVM**

Risorse totali = 7

- Partner**
- A. Cuturi
  - P. Rizzo
  - M. Ratzinger
  - G. Sersale
  - A. Chouillou

- Senior**
- S. Chelini
  - P. Rinaldi

**FIA**

Risorse totali = 5

- Partner**
- G. Landi (ad interim)
  - B. Ellero (Resp. PD)

- Senior**
- L. Novati (PD)

- Junior**
- F. Colli Vignarelli
  - M. Cecchini

**Wealth Management  
(GP - Advisory)**

Risorse totali = 4

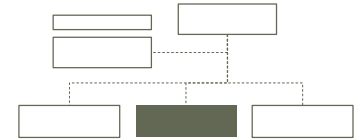
- Partner**
- M. Orioli
  - L. Cuppini

- Senior**
- G. Piazzoli

- Junior**
- G. Derada Troletti



## 2° Livello



**Operations – Amministrazione**  
Consigliere Delegato  
M. Capolino

**Amministrazione,  
Bilancio & Controllo**

Risorse totali = 1

**Junior** | ▪ L. Rizzi

**Corporate  
Governance & Legal**

Risorse totali = 1

**Partner** | ▪ K. Bolzoni

**Operations  
Mid – Back Office**

Risorse totali = 3

**Senior** | ▪ C. Gipponi (Resp.)  
▪ V. Marangoni  
▪ S. Bottini

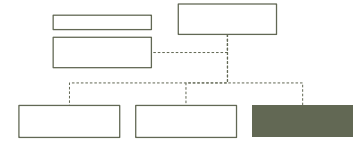
**Staff  
Segreteria Societaria**

Risorse totali = 2

**Junior** | ▪ J. Narzisi  
▪ G. Garavaglia



## 2° Livello



**Marketing & Sales**  
Partner Responsabile  
D. Colantonio

**Mercato e Prodotti**

Risorse totali = 3

- Partner**
- D. Colantonio
  - M. Orioli
  - M. Soriani

**Marketing operativo**

Risorse totali = 1

- Junior**
- E. Locorotondo

**Vendita e post-vendita**

Risorse totali = 3

- Partner**
- D. Colantonio
- Senior**
- G. Cavalli
  - A. Luise

**Data Management & Web Analytics**

Risorse totali = 2

- Senior**
- V. Picciolini
- Junior**
- L. Catalucci